

AcerSync Installation Guide – Acer Android Phones

I. How to perform Cloud Sync for your Acer phone to synchronize with Google contacts and calendar?

Acer Sync allows your Acer phone to synchronize with Google contacts and calendar. To enable Cloud Sync on your Acer phone, please take the following steps:

1. Make sure your phone is connected to the internet.
2. If the phone has not signed in to your GMail account during the first boot up process, log in GMail account by launching GMail application.
3. Once you logged into your GMail account using your phone, the Contacts and Calendar would start synchronization in the background using available WiFi or 2G/3G data connection.

II. How to set up AcerSync software on your PC?

To sync your Acer phone with your PC over-Wi-Fi*, or perform cloud sync between your PC and Google account, you must install Acer Sync software components on your PC. Please download Acer Sync software from the Acer website:

* For phones with Wi-Fi only

III. Which Microsoft applications do I need before installing AcerSync on my PC?

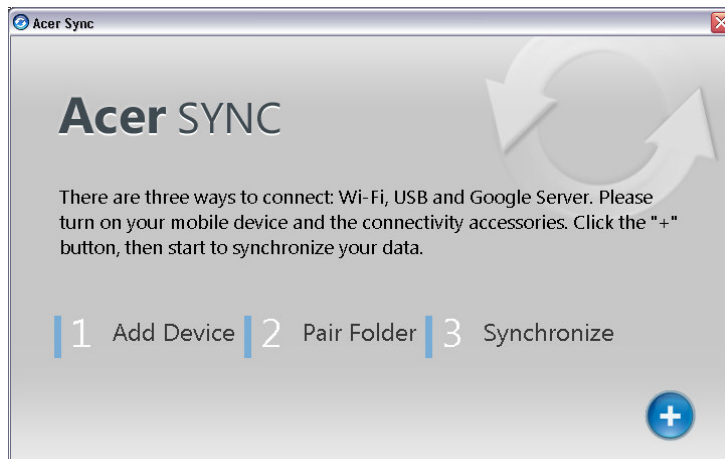
Install the applications for your version of Windows PC

- **Windows XP (32-bit) requires:**
 - ✓ .Net Framework 3.0 (32-bit) (available from: <http://go.microsoft.com/fwlink/?LinkId=70848>)
- **Windows Vista/7 (32-bit) requires:**
 - ✓ .Net Framework 3.0 (32-bit) (available from: <http://go.microsoft.com/fwlink/?LinkId=70848>) (Windows 7 can skip this)
- **Windows Vista/7 (64-bit) requires:**
 - .Net Framework 3.0 (64-bit) (available from: <http://go.microsoft.com/fwlink/?LinkId=70849>) (Windows 7 can skip this)

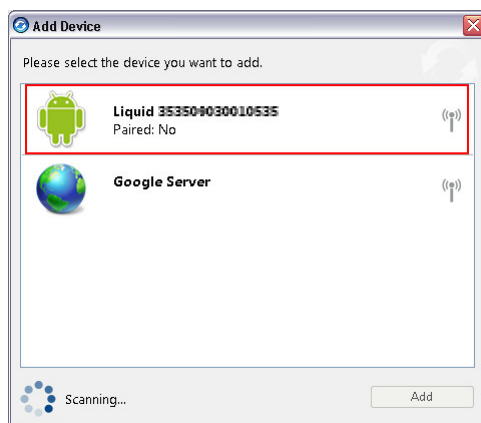
IV. How to setup a wireless connection for Acer Sync?

For Acer phones with wireless LAN (WLAN) features, the connection can be set up via wireless network (Wi-Fi network).

1. **Setting up your Acer phone with your WLAN network.** Connect your Acer phone to a wireless network. For security reasons, your Acer phone and your PC need to be under the same wireless network. This means both of your Acer phone and your PC need to join the same wireless network name (SSID) and/or Access Point wireless router.
2. **Pairing your Acer phone with your PC.** For security reasons, your Acer Android Phone needs to pair with a PC. To do this, simply add a WLAN profile using Acer Sync:
 - a) Launch AcerSync by the following link on PC/: Windows XP/Vista/7: Start menu --> All Programs --> Acer --> Acer Sync --> Acer Sync



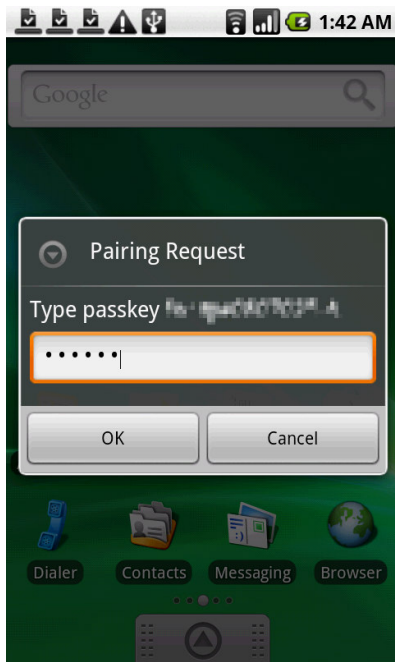
- b) Click on "+" button to add a profile.
- c) When the profile window appears, select your Acer phone. Add your phone to create the pairing.



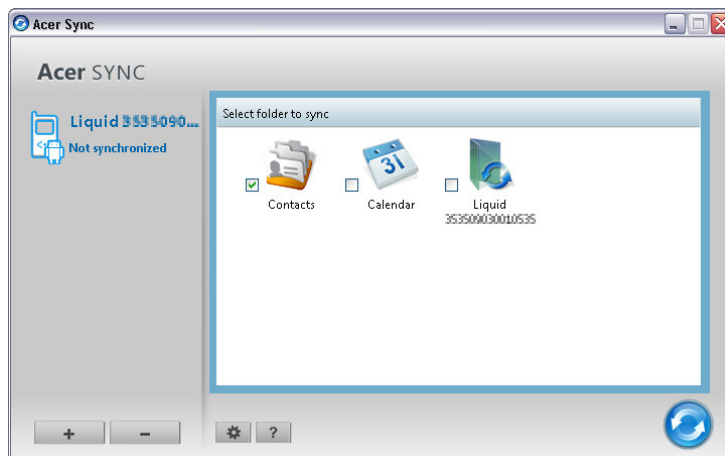
- d) On your PC, a window will appear displaying the passkey. The key is randomly generated every time a profile is created. Use this pairing code on your phone (835730 in this case)



- e) The "Pairing Request" screen should appear on your Acer Android Phone. Enter the code to finish pairing. Click on "OK" button to finish adding the profile.



f) On your PC, your Acer phone is now listed in the profile list.



g) During subsequent uses, Acer Sync can be connected via WLAN and perform synchronization.

V. How to obtain a Google account?

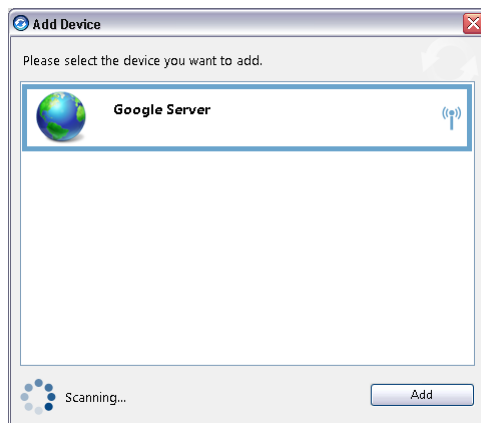
1. To use the Cloud Sync features provided by Acer Sync, you need a Google account. Simply go to <http://mail.google.com> and click on the "Create an account" button.
2. Once your account is created, you will be given a user name and a password which are required to access your account.
3. Enable Calendar service in your Google account. By default, the Calendar feature is not enabled when a new Google account is created. You have to go to the Calendar service and enable it as follows:
 - a) With your web browser, go to <http://mail.google.com>
 - b) Log in with your Google user name and password.
 - c) When the Gmail page loads, click on the "Calendar" link.

Gmail **Calendar** [Documents](#) [Photos](#) [Reader](#) [Sites](#) [Web](#) [more](#) ▼

d) Follow the on-screen steps to enable the Calendar service in your Google account.

VI. How to setup Cloud Sync for your PC to synchronize with Google contacts and calendar?

1. If Microsoft Outlook 2007 (or Acer PIM) is installed on your PC, AcerSync will automatically install the component needed to support contact and calendar synchronization with the Google service. The benefits of storing your contacts and calendar information on Google services are that you can have a backup on the web and use multiple client devices, such as your PC and your Acer Phone, to synchronize with it.
2. To set up the profile between your PC and Google, just follow these easy steps:
 - a) Make sure your PC is connected to the Internet.
 - b) Launch Acer Sync by the following link on PC: Windows XP/Vista/7: Start menu --> All Programs --> Acer --> Acer Sync --> Acer Sync
 - c) Click on "+" button to add a profile.
 - d) Select "Google Server" and click on the "Add" button



- e) Fill in the user name and password to your Google mail account. Click "OK" to add the profile.
- f) Once the "Google Server" profile is added, make sure your version of Microsoft Outlook is selected using the following settings:

- Click "Settings" button () in Google Server profile screen.
- Ensure "Sync PIM" item is set to "Outlook 2007"

Sync PIM to ▼

- g) Once the Google Server profile is added, you can synchronize your contacts and calendar data with your Google

account by clicking the "Sync" button.

